

S01.1 Label Acoustic Zones

Technical Document

WELL Building Standard™ version 2 (WELL v2™), Q1 2021 addenda



HOW TO USE THIS DOCUMENT:

This document is intended to serve as a guide on how to create a project **technical document** to **incorporate strategic planning required to prevent issues of acoustic disturbance from various sources of noise**.

This document is meant to demonstrate an acceptable degree of detail for a documentation submission. The Feature cannot be demonstrated solely through a confirmation that the requirements have been or will be implemented. The level of detail is up to the discretion of the project team, but the documents must include specific details demonstrating that the actual requirements have been enacted in the project boundary.

This document and similar tools are intended to assist projects in their pursuit of WELL v2 but use of this document and/or similar tools are in no way a guarantee of achievement of any rating or designation, and no representation or warranty is made regarding the likelihood of achieving any rating or designation.

Note: The below document is based on the Q1 2021 addenda of the WELL Building Standard™ version 2 (WELL v2™). Project teams are required to implement the feature requirements from the addenda version assigned to their project or any more recent addenda version.

FEATURE PART REQUIREMENTS:

For All Spaces

The following requirements are met:

- a. *An annotated document is submitted and made available to occupants showing labeled zones throughout the project floor plan or similar schematic document as follows:*
 1. *Loud zones: includes areas intended for loud equipment or activities (e.g., mechanical rooms, kitchens, fitness rooms, social spaces, recreational rooms, music rooms)*
 2. *Quiet zones: includes areas intended for concentration, wellness, rest, study and/or privacy (e.g., restorative spaces, lactation rooms, nap rooms).*
 3. *Mixed zones: includes areas intended for learning, collaboration and/or presentation (e.g., auditoriums, classrooms, breakout spaces).*
 4. *Circulation zones: includes occupiable areas not intended for regular occupancy (e.g., hallways, egress, atria, stairs, lobbies).*
- b. *If Loud zones directly border Quiet zones, projects provide a plan for reprogramming or mitigating sound transmission between Loud zones and Quiet zones.*

WELL Core Guidance:

Meet these requirements in the whole building, based on any knowledge of anticipated uses.

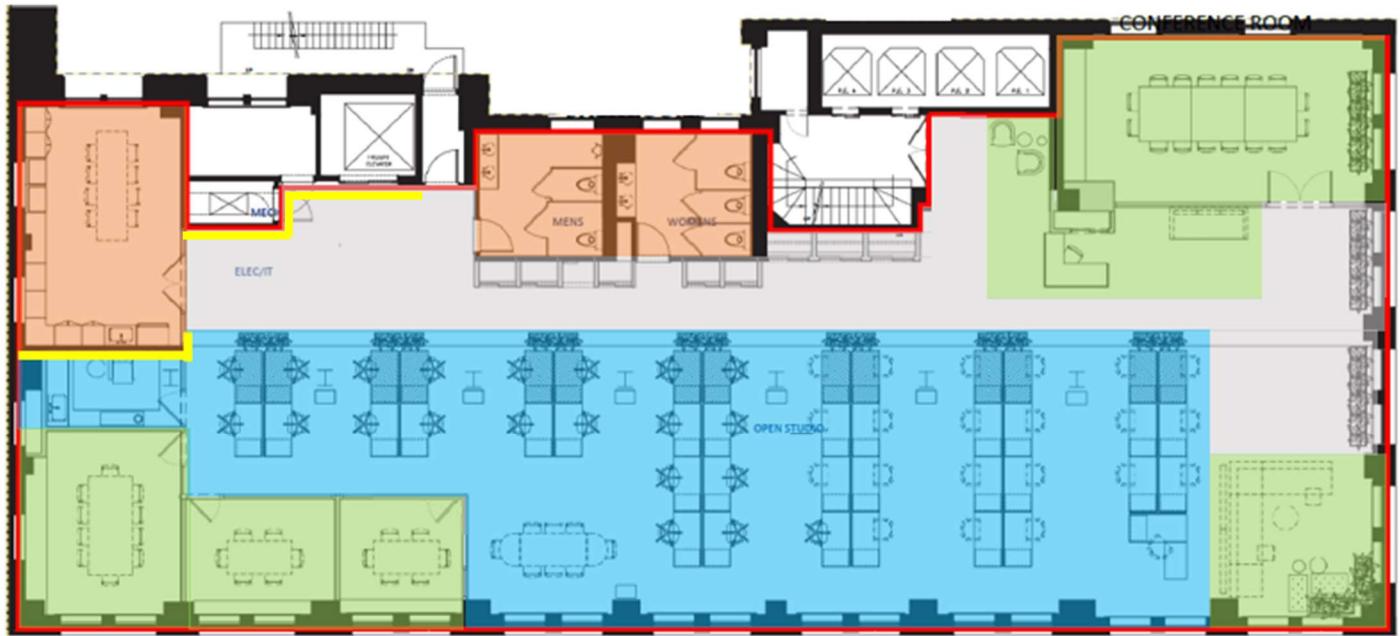


The below sample documentation is intended to provide guidance in creating a technical document for labeling acoustic zones. It is not a template. You may note included components that are not required to demonstrate compliance with this Feature.

Example document for Feature S02 Part 1 a and b

S01.1 Label Acoustic Zones

- Loud Zones
- Quiet Zones
- Mixed Zones
- Circulation Zones
- Project Boundary
- Loud Zone next to Quiet Zone



Part 1.b Plan for Mitigating Sound Transmission between Loud Zones and Quiet Zones:

There are Loud Zones (e.g., kitchen with social space for eating, mechanical and IDF rooms) adjacent to Quiet Zones (wellness room and quiet open office space). It was not possible to reprogram the space in this existing interiors project, so the following strategies have been implemented to mitigate sound transmission:

- ✓ The wall highlighted in yellow in the annotated architectural drawing above has a sound transmission class (STC) of 60 (as recommended in WELL S03 Part 1: Design for Sound Isolation at Walls and Doors.)
- ✓ The doors to the kitchen have the following attributes to mitigate sound transmission:
 - Self-closing
 - Non-hollow core
 - STC of 30
 - Seals at the head, jamb and base

TIPS FOR MULTIPLE LOCATIONS

- Organizations participating in WELL Portfolio or the multiple projects pathway can submit a Guideline for this feature part, as well as a technical document for each audited project. This Guideline must outline the feature requirements, at minimum, and it can be shared across multiple projects as a means to provide guidance for compliance. A subset of audited projects must also each submit their own technical document that demonstrates compliance with the feature requirements.